

CAT COMPLETE BATTERY

Group List Report, Part I

School: ONEONTA MONT

Grade: 2

Purpose

This report summarizes achievement data for a specified group. Part I provides a variety of norm-referenced scores for the group; Part II provides the individual scores for each student. Together with classroom assessments and classwork, this information can be used to identify potential strengths and needs in the content areas shown.

Number of students: 24  
Number of students using accommodations: 0

Form/Level: C-12  
Test Date: 05/06/11 Scoring: PATTERN (IRT)  
QM: 30 Norms Date: 2000  
District: ONEONTA MONT

City/State: ONEONTA MONT, CA  
CTBID: 11144M255800001-02-00008-000030

Norm-Referenced Scores

	No. of Stdnts	No. using Accom*	MNS	GME	MNCE	MSS	MDNP	Low/High NP
Reading	24	0	6.5	5.0	66.4	643.0	74.7	24-99
Vocabulary	24	0	6.4	3.9	65.2	624.0	72.5	19-99
Reading Composite	24	0	6.7	4.5	67.7	633.8	80.0	34-99
Language	24	0	7.1	6.6	73.1	656.2	90.0	21-99
Language Mechanics	24	0	7.1	5.3	72.8	640.6	89.3	21-99
Language Composite	24	0	7.3	5.8	73.9	648.8	88.0	35-99
Mathematics	24	0	7.0	3.7	71.3	607.1	87.0	23-99
Math Computation	24	0	7.3	3.7	76.6	585.3	88.0	29-99
Math Composite	24	0	7.4	3.7	74.5	596.5	90.0	39-99
Total Score**	24	0	7.1	4.7	72.3	635.4	85.7	31-99
Spelling	24	0	7.4	5.5	76.0	636.5	92.7	37-99
Word Analysis	24	0	5.8	---	60.5	632.3	64.0	8-99

\* Based on locally reported data  
\*\* Total score consists of Reading, Language, Mathematics

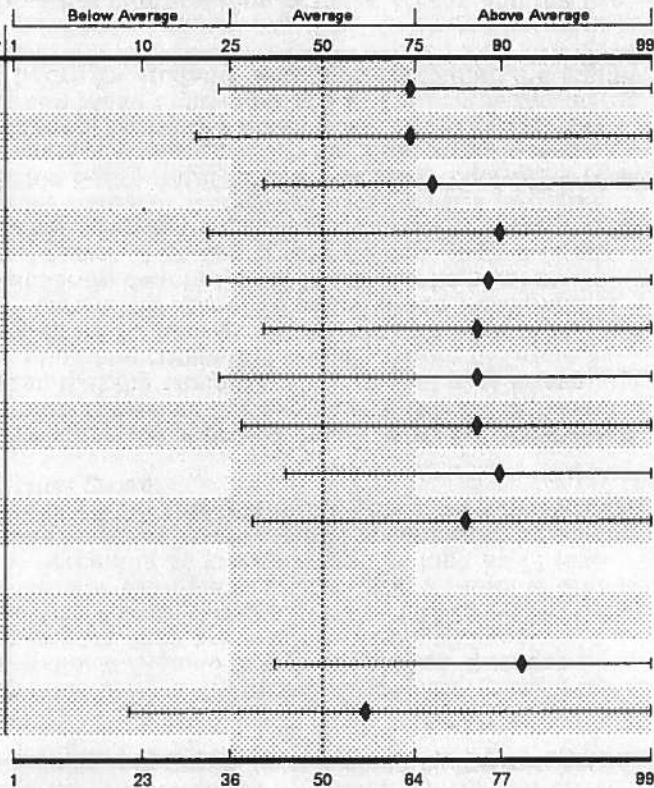
GME Norm-Referenced Scores are not available

MNS: Mean National Stanine  
GME: Grade Mean Equivalent  
MNCE: Mean Normal Curve Equivalent  
MSS: Mean Scale Score  
MDNP: Median National Percentile  
Accom: Accommodations

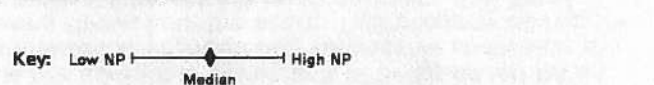
Observations

Displayed on the left are the norm-referenced scores for every content area tested. The Median National Percentile (MDNP) score, and the lowest and highest National Percentile (NP) scores of the group are shown in the last two columns. Displayed on the right is a graph of the MDNP scores. The MDNP is indicated by the diamond. The width of the band running through the diamond represents the range (low to high) of the students' scores. The shaded area on the graph represents the average range of scores, defined as the middle 50 percent of students nationally. Three of the group's twelve MDNP scores are in the average range. Scores in the area to the right of the shading are above the average range.

National Percentile Scale



Normal Curve Equivalent Scale



Scores in the area to the left of the shading are below the average range. Nine MDNP scores are above the average range and no MDNP scores are below the average range. In Reading, for example, the MDNP score is 74.7, which is in the average range. The lowest Reading score in the group is 24 and the highest is 99. (This information is shown both on the graph and in the "Low/High NP" column.)

Additional information about the interpretation of these scores and the use of test results can be found in the *Teacher's Guide to TerraNova, The Second Edition* and at CTB's website, [www.ctb.com](http://www.ctb.com).